

Dekton® Stonika stands for hyperrealism, better definition and depth and most importantly, stays true to the same characteristics which make Dekton® XGloss a state-of-the-art ultra-compact surface.

Hyperrealist Design

Unlike other surfaces, with Dekton® XGloss Stonika technology the use of a thick vitreous layer is not necessary. Consequently, this means the image is not distorted and allows for a better clarity and realism of the designs.

Perfect Edges

Dekton® XGloss Stonika appears as a unique piece unlike other products where a glassy layer is discernable.

Its surface layer is almost imperceptible due to its thickness, the thinnest in the market, which fuses with the base to perfection creating a single more compact and resistant material.

Thermal and Scratch Resistance

Dekton® Stonika belongs to the Xgloss collection, so it retains the same scratch properties as other polished colours.

Base and surface behave in the same way to temperature changes, avoiding common cracks caused by the difference in expansion between the two elements.

Dekton® Stonika advantages

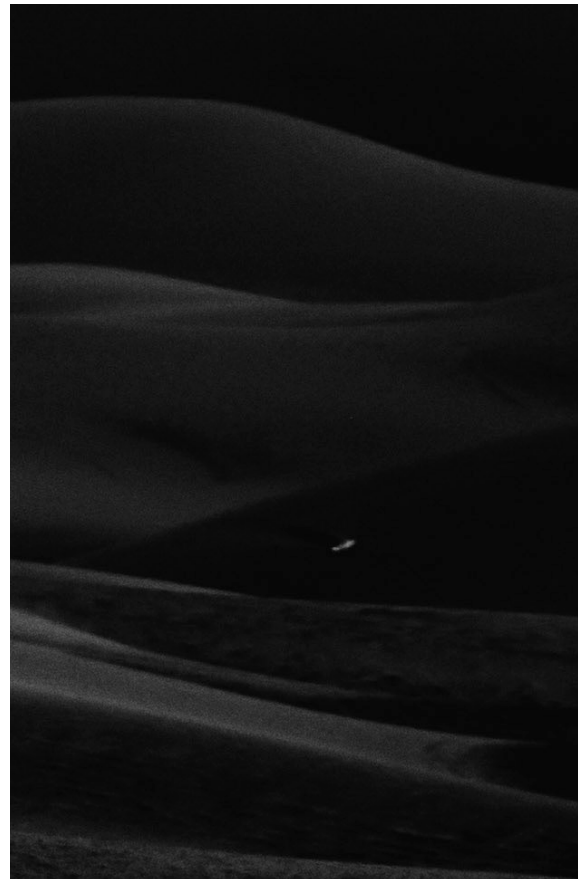
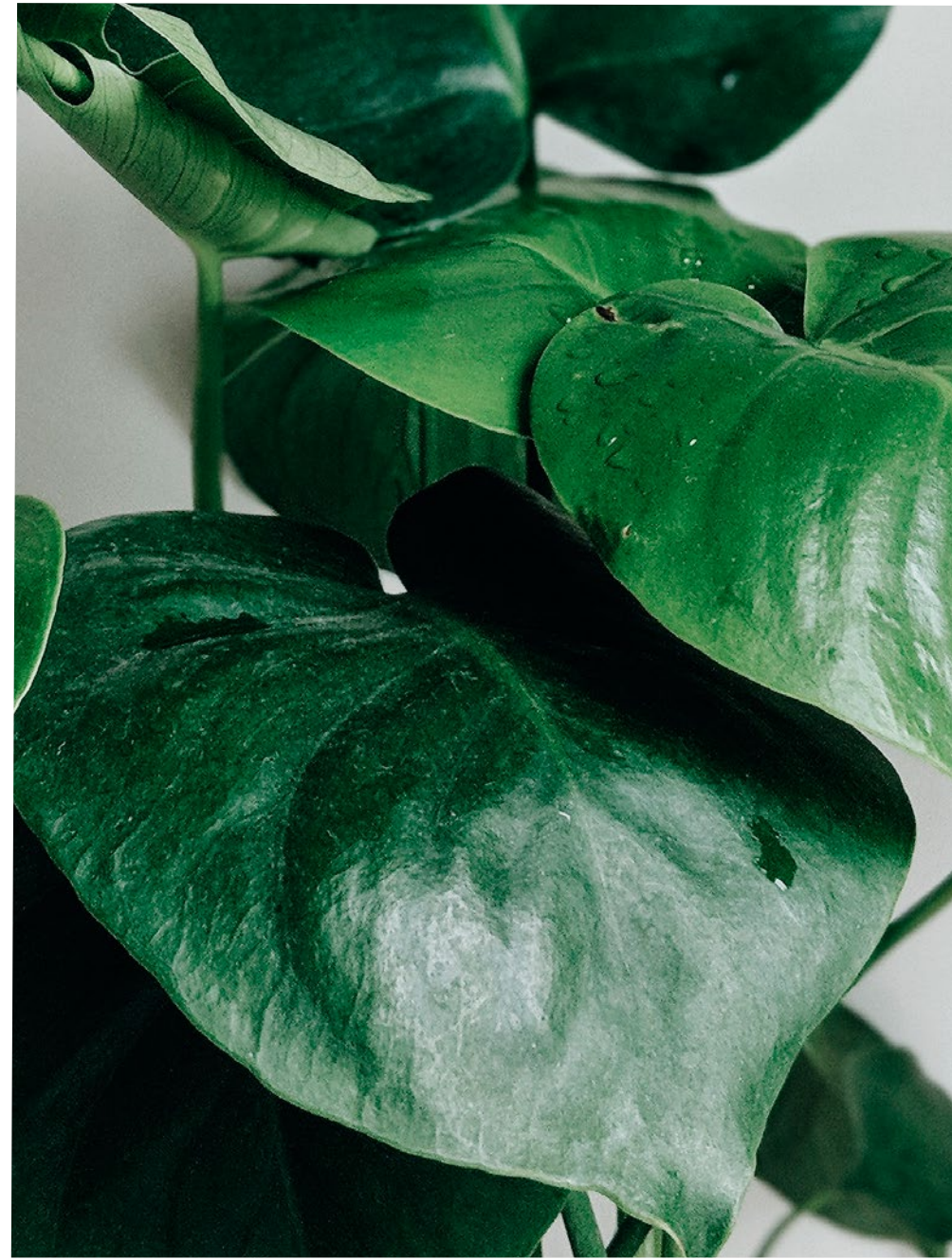


*Decoration in volume in Taga and Arga colours.

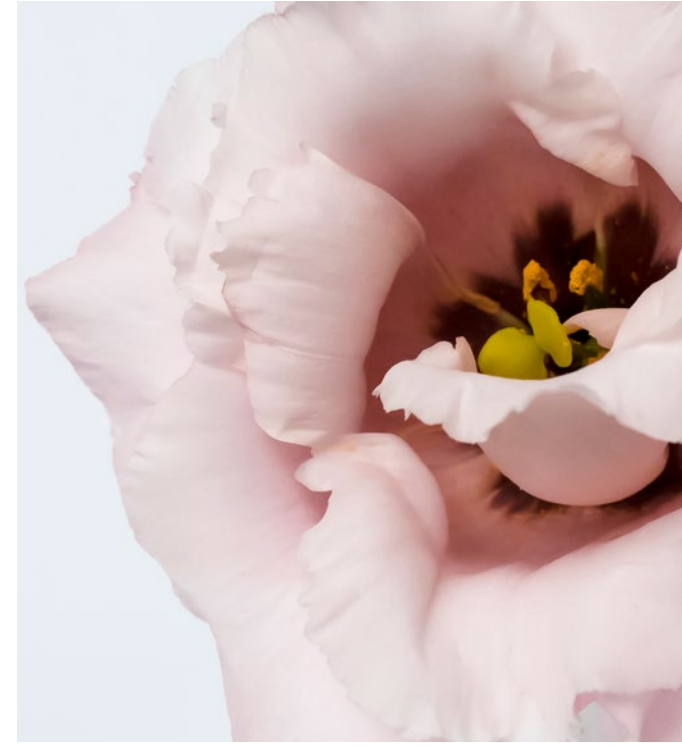
Dekton® Stonika
inspirational colour
moodboard



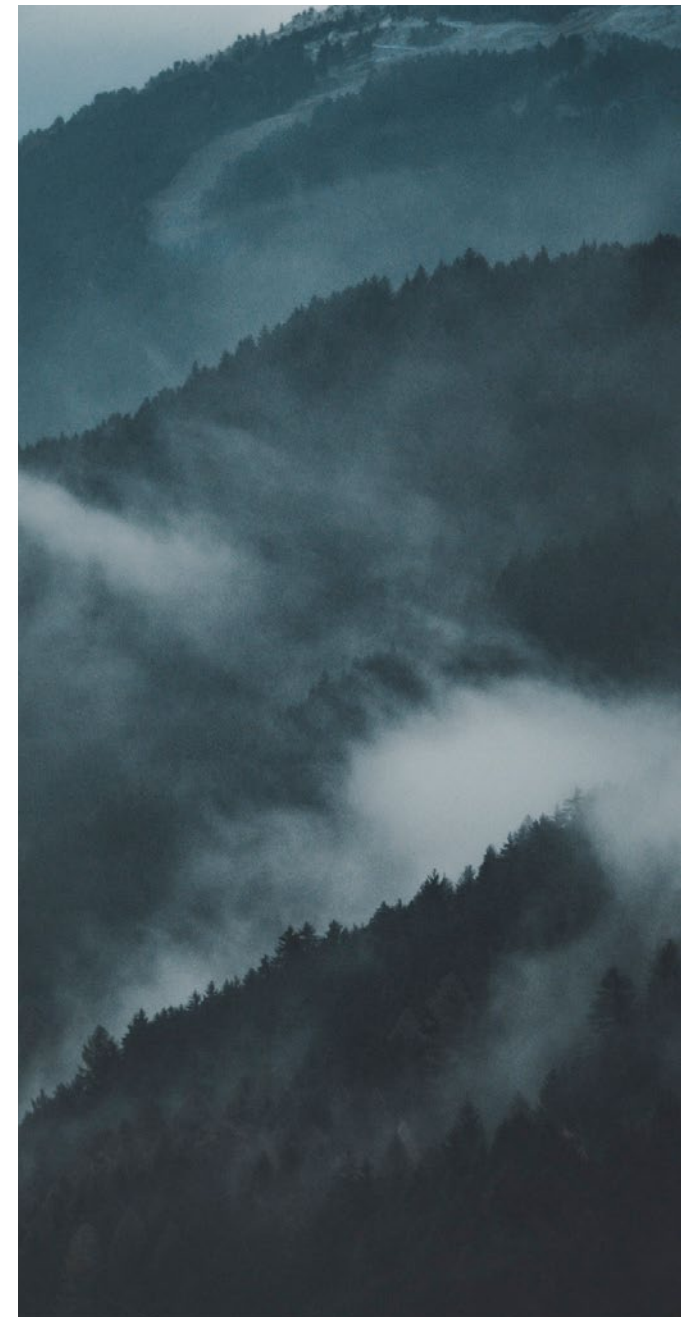
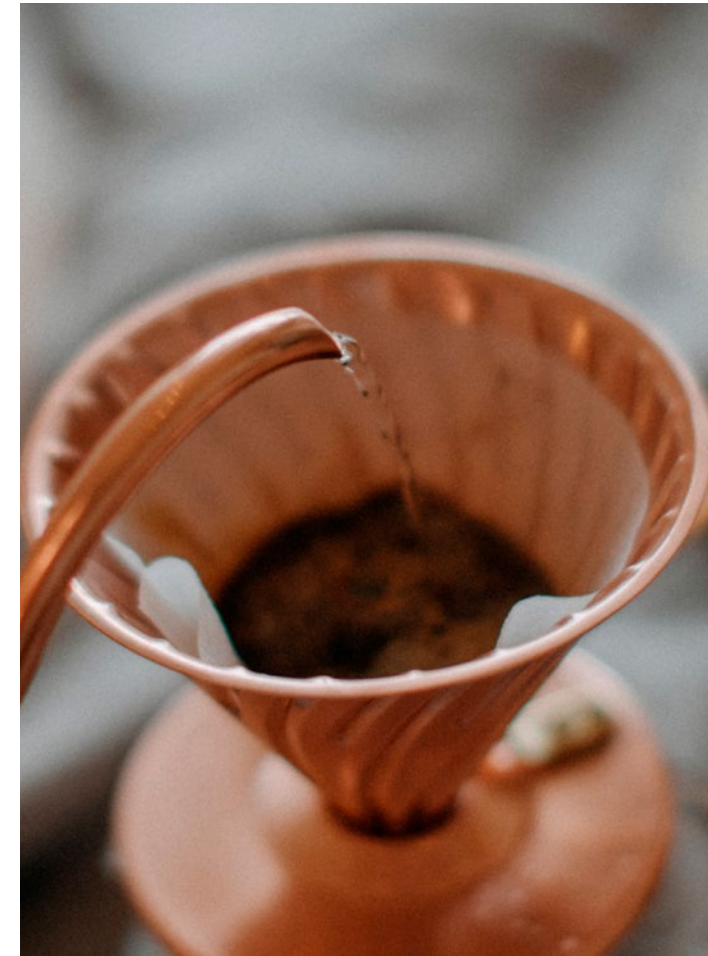
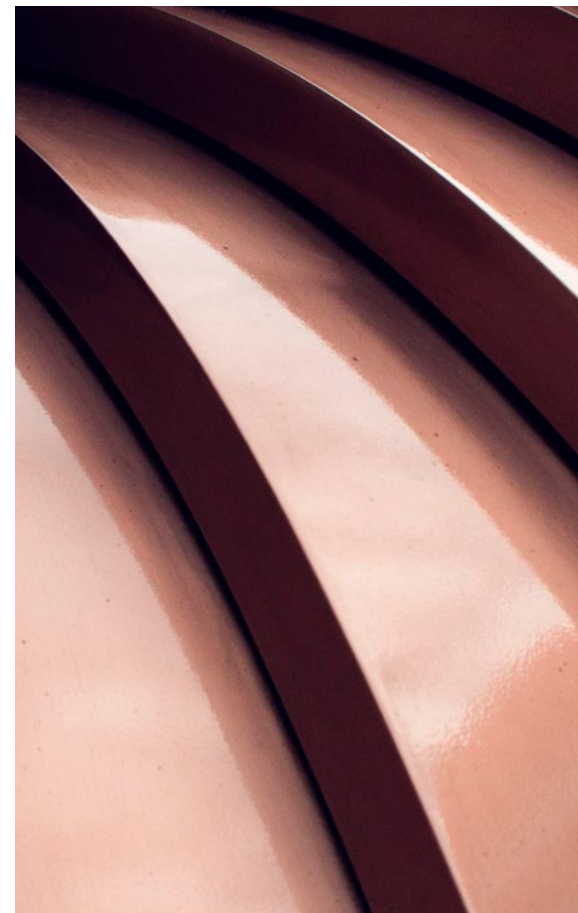
Dekton® Stonika **KORSO**



Dekton® Stonika **TAGA**



Dekton® Stonika **ARGA**



Dekton® Stonika **BERGEN**



Dekton® Stonika Bergen is the main centrepiece of any setting. Combines perfectly with all metals and woods.

Settings
Industrial / Classic / Modern



Dekton® Stonika

BERGEN

Inspired by natural Portobello stone, Dekton® Stonika Bergen strives for perfection in tone, structure and depth. The beauty of its greyish veins with sculptural pattern, on an off-white base. A design loaded with personality and elegance.



 Hyperrealist Design

*Copper taps
by Dornbracht*

*Mortar by Normann
Copenhagen*

*Le Cocktail Velvet Chair
by Oliver Bonas*

Dekton
Stonika
BERGEN



Dekton® Stonika

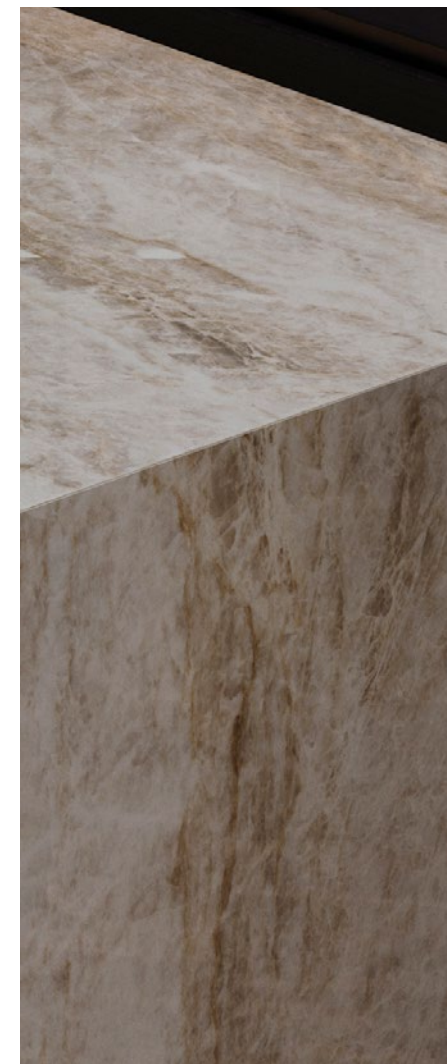
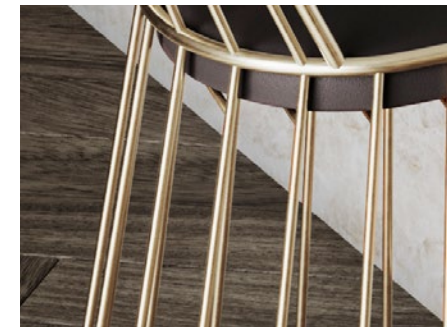
Norm Architects Watch

TAGA

Inspired by the quartzite of the Taj Mahal, Dekton® Stonika Taga is an interpretation adapted to current trends while maintaining the character of natural stone. The general greyish tones with marble and crystalline veins enhance its natural structure. Its splendid sheen and aesthetic quality contribute to making this a premium model.

 Hyperrealist Design

 Decoration in Volume



Smeg hob

The **dark matte tones in any type of material** (leather, wood, etc) create interesting contrasts which highlight the intense brilliance of **Dekton® Stonika Taga**.

The **golden, earthy and white elements** are the ideal way to create a contemporary and elegant setting.

Settings
American / Classic



Dekton
Stonika
TAGA

Dekton® Stonika Arga creates a striking colour balance with **low saturated tones and golden details.**

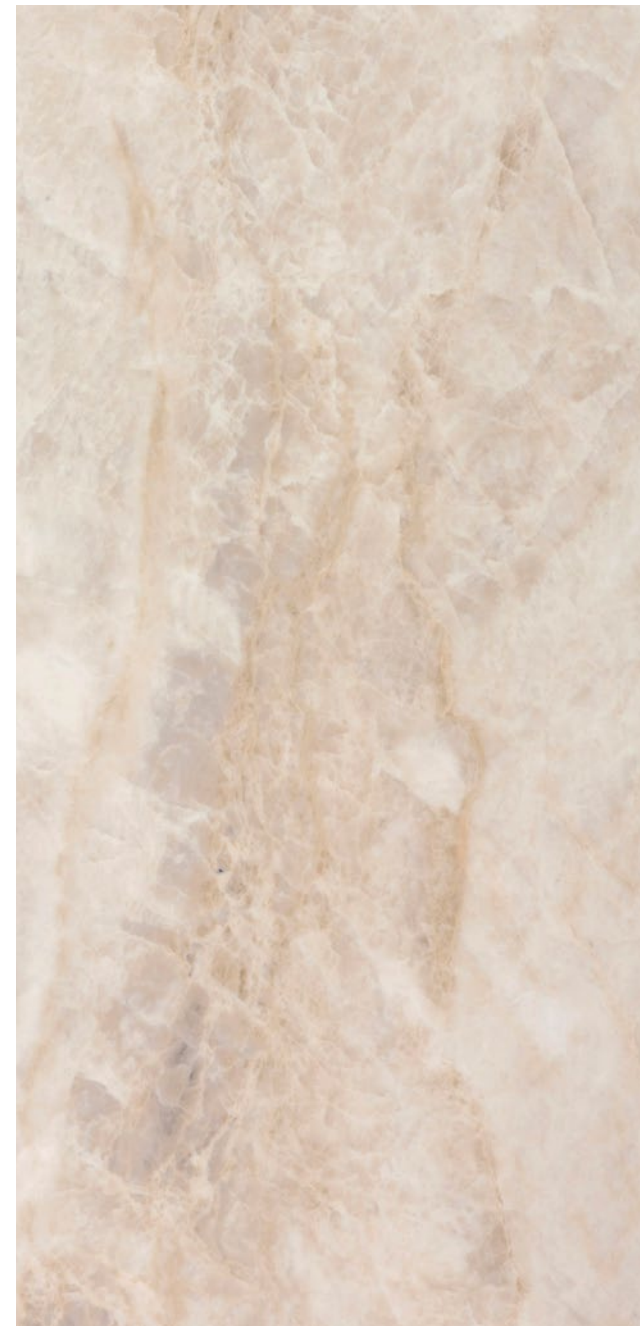
Settings
Classic / Modern

Dekton® Stonika

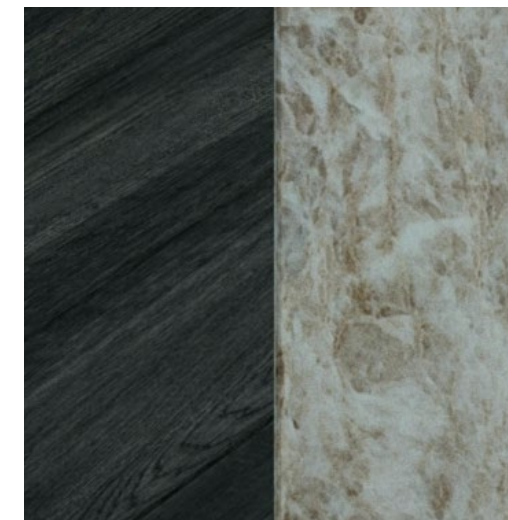
ARGA

Inspired by the quartzite of the Taj Mahal, Dekton® Stonika Arga the luxury of the natural stone with the properties of Stonika. Its smooth cream background, with subtle brown-gold veins, intensifies its dramatic structure. A hyperrealist graphic, with a dazzling sheen, gives depth and richness to this material

 Hyperrealist Design  Decoration in Volume



Grey Armchair by Zara Home



Twisted metal lantern by Zara Home



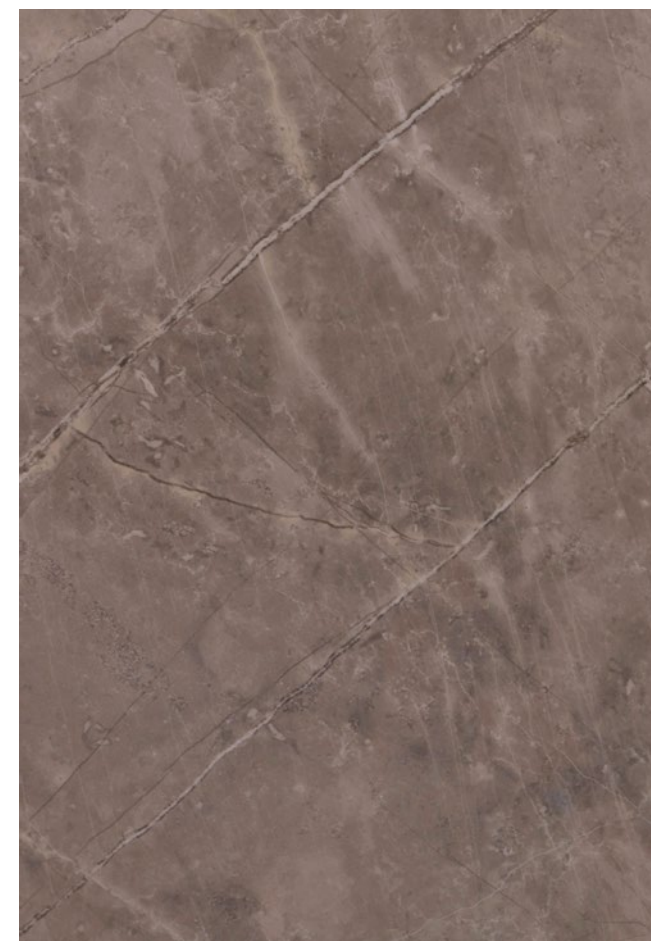
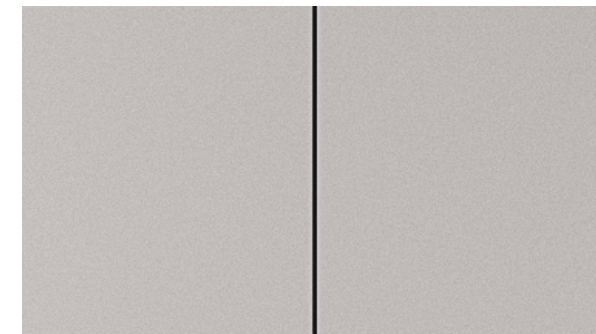
Dekton
Stonika
ARGA

The **beige, earthy and ochre tones** in all their beauty create a perfect setting for the **Dekton® Stonika Korso** to exude its own shine.

Settings
Industrial / Classic / Modern



*Le Cocktail Velvet Twin
by Oliver Bonas*



*Clap armchair by
Patricia Urquiola*



Dekton® Stonika

KORSO

Inspired by natural stone, Dekton® Stonika Korso is a colour which resembles the delicateness and versatility of Gris Pulpis marble. A colour palette based on earthy tones contrasts with random grey veins of different intensity. Timelessness, visual impact and big personality define the Dekton® Stonika Korso with its combination of dazzling sheen and graphic hyperrealism.



*Krenit Bowl by Normann
Copenhagen*

Dekton
Stonika
KORSO

GROUP 3

KORSO

GROUP 4

BERGEN

TAGA

ARGA

